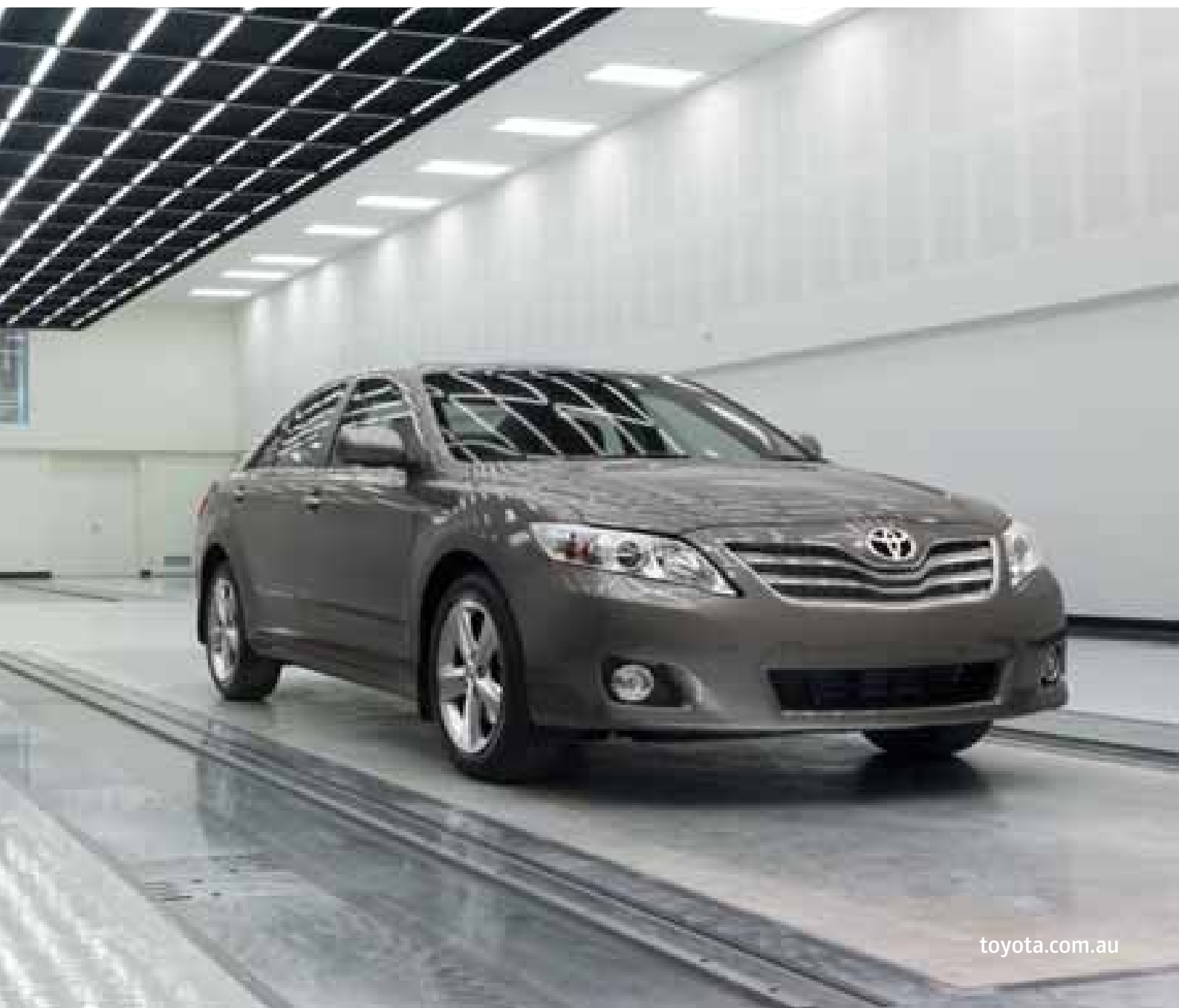


 **TOYOTA CAMRY**  
oh what a *feeling!*

EVERY BIT BRILLIANT



[toyota.com.au](http://toyota.com.au)



*Grande in Ink shown.*

In the search for perfection, Camry's designers have left no stone unturned. The result? A car that continues to set the standard in its class, and that adds up to so much more than the sum of its parts.

Increased fuel economy (Automatic transmission only) and technological sophistication mean Camry now exceeds your expectations like never before. From its world class braking package, Active Braking with intelligence (AB-i), right through to Vehicle Stability Control (VSC), Traction Control (TRC), MP3 and USB<sup>°</sup> compatibility, Smart Entry and Start system<sup>†</sup> and reversing camera<sup>\*</sup>, Camry is more than equipped to tackle the most demanding of Australian roads.

And more than ready to please the most discerning of drivers.

With its newly refined sleek exterior and prestigious interior, Camry is smooth, quiet, safe, and comfortable. Couple that with brilliant performance and you have a car that is every bit the overachiever.

<sup>°</sup> Standard on Ateva and optional on Altise and Sportivo. <sup>\*</sup> Only available in Grande. <sup>†</sup> Standard on Grande and Ateva (optional extra on Altise and Sportivo). Front cover: Grande in Liquid Metal shown.



## CAMRY. TOYOTA GENUINE ACCESSORIES.

Whether you want to add style, functionality or safety, you'll find whatever you're looking for in this comprehensive range of Toyota Genuine Accessories for the Camry.

### TOYOTA GENUINE ACCESSORIES ARE COVERED BY OUR TOYOTA WARRANTY\*

*\*All Toyota Genuine Accessories purchased and fitted to a Toyota are warranted for the remainder of the New Vehicle Warranty or 12 months, whichever is greater. Toyota Genuine Accessories purchased from an authorised Toyota Dealer over the counter are warranted from the date of purchase for 12 months. Conditions apply. All warranties are additional to the implied warranties under the Trade Practices Act 1974.*

*△ ParkAssist is designed as a driver assist device only and should not be used as a substitute for skilled driving and safe parking practises. The area into which the vehicle is to be reversed must be visually monitored by the driver while parking.*

*\*\*\* Towbar capacity subject to regulatory requirements, towbar design, vehicle design and towing equipment limitations.*

*† Current navigation mapping database encompasses major capital and primary national road networks, as well as offering some coverage of regional areas.*

*^ The Bluetooth word mark is owned by Bluetooth SIG, Inc. Bluetooth™ will only operate with telephones enabled with compatible Bluetooth™ wireless technology (HFP (Hands Free Profile) v1.0 and OPP (Object Push Profile) v1.1 international standards). OPP functionality only works on satellite navigation equipment.*

*° Requires fitment of centre cluster facia panel.*

*Some Toyota Genuine Accessories are not applicable to all Camry models. See your Dealer for advice regarding Toyota Genuine Accessories. Pictured Accessories are all sold separately.*

*For a comprehensive guide on the entire range of Toyota Genuine Accessories, visit our website at [accessories.toyota.com.au](http://accessories.toyota.com.au).*

*Camry Altise in Silver Ash pictured is accessorised with Toyota Genuine 18" Kappa Alloy Wheels, Rear Spoiler, Bonnet Protector, Headlamp Covers, Slimline Weathershields and ParkAssist Clearance Parking Sensors.*



**RAPTOR ALLOY WHEEL**  
(16" X 7")

Applicable for Altise,  
Ateva & Grande.



**KAPPA ALLOY WHEEL**  
(18" X 7.5")



**ALLOY WHEEL  
LOCK NUT SET**



**PARKASSIST<sup>+</sup> - CLEARANCE  
PARKING SENSORS  
(2-HEAD KIT) & REVERSE  
PARKING SENSORS (4-HEAD  
KIT) (SOLD SEPARATELY)**

Reverse ParkAssist not  
applicable on Grande.



**FRONT WEATHERSHIELDS**  
(SOLD SEPARATELY)

Slimline weathershields  
also available.



**BONNET PROTECTOR  
& HEADLAMP COVERS**  
(SOLD SEPARATELY)



**REAR SPOILER**

Applicable for Altise, Ateva  
& Grande.



**1200KG TOWBAR  
(BRAKED CAPACITY),  
TOWBALL & TRAILER  
WIRING HARNESS  
(SOLD SEPARATELY)\*\***



**KAYAK CARRIER**



**4 & 6 SKI CARRIER**  
(SOLD SEPARATELY)



**PACIFIC 200 ROOF POD**



**ATLANTIS 200 ROOF POD**

Also available in 600  
(SOLD SEPARATELY)



**PRO RIDE  
BICYCLE CARRIER**



**AERO ROOF RACKS**  
(2 BAR SET).



**SATELLITE NAVIGATION  
AUDIO SYSTEM\* INCLUDES  
4-IN-DASH MP3 CD  
CHANGER & RADIO WITH  
BLUETOOTH™ HANDSFREE  
COMMUNICATIONS°**

Applicable for Altise, Ateva & Sportivo.



**BOOTLINER**



**SEAT COVERS - FRONT & REAR**  
(SOLD SEPARATELY)

Grey applicable for Altise & Ateva.  
Sandstone applicable for Ateva only.  
Front Seat Covers are Airbag  
Compatible.

**SAFETY WARNING:** Fitment of Front  
Seat Covers which are not compatible  
with Front Seat Side airbags may  
adversely affect airbag deployment  
and may result in serious injury.



**SCUFF PLATES -  
CHROME (FRONT & REAR  
SETS) & ILLUMINATED  
(FRONT ONLY)**  
(SOLD SEPARATELY)

Applicable for Sportivo (chrome  
rear only), Altise, Ateva & Grande.



**INTERIOR ILLUMINATION**



**CARPET FLOOR MATS -  
FRONT & REAR SET**  
Grey applicable for Altise &  
Sportivo. Sandstone applicable  
for Ateva & Grande.



Grande interior shown.

## AN ALLURING PLACE TO BE

Designed to integrate driver and vehicle, the Camry's luxury interior is crafted with high attention to detail for superb levels of comfort.

The cabin envelops the driver, with adjustable seats, lumbar support and tilt and telescopic steering wheel putting the driver in the perfect driving position.

Controls and switches are positioned instinctively, exactly where the driver expects them to be. The leather steering wheel, for example, incorporates stereo controls for easy access while driving.

Information panels are within natural sightlines. Simple, elegant graphics provide uncluttered information at a glance.

New airbag technology affords the driver a lighter, more responsive steering wheel. All Camry models now come standard with dual stage driver and front passenger, full side and full length curtain SRS airbags.

The Camry's sound insulation technology means a quieter, less fatiguing drive while allowing full appreciation of the car's powerful Bluetooth<sup>®</sup> compatible stereo system. The Altise now comes equipped with six speakers, while the Grande has eight, including a sub woofer and amplifier. And USB compatibility comes standard on the Ateva and is optional on the Altise and Sportivo.

^ The Bluetooth word mark is owned by Bluetooth SIG, Inc. Bluetooth<sup>®</sup> will only operate with telephones enabled with compatible Bluetooth<sup>®</sup> wireless technology (HFP (Hands Free Profile) v1.0 and OPP (Object Push Profile) v1.1 international standards). OPP functionality only works on satellite navigation equipment.

## EXTERIOR COLOURS

	DIAMOND WHITE	SILVER ASH*	INK*	SAKANA SILVER*	WILDFIRE*	LIQUID METAL**	ARCTIC FROST*	REEF**
ALTISE	▲○	▲○	▲○	▲○	▲○	▲○	▲○	▲○
ATEVA#	●□○■	●□○■	●□○■	●□○■	●□○■	●□○■	●□○■	○■
SPORTIVO#	○■	○■	○■	○■	○■	○■	-	○■
GRANDE	■□	■□	■□	■□	■□	■□	■□	■
INTERIOR COLOURS	▲ GREY (FABRIC)	● SANDSTONE (FABRIC)	○ DARK GREY (FABRIC)	■ DARK GREY (LEATHER ACCENTS)	□ SANDSTONE (LEATHER ACCENTS)			

Note: Toyota Australia reserves the right to vary and discontinue from time to time the interior and exterior colours, trims and colour/trim/model combinations currently available. Colours and trims displayed here are a guide only and may vary from actual colours due to printing / display process. See your Toyota dealer to confirm colour/trim/model availability when ordering your vehicle.

\*Indicates mica or metallic paint which is available at extra cost on Altise and Ateva.

#Indicates vehicle interior featuring leather accents, is available at extra cost.

^ Available from July 2009 production.

## CAMRY TECHNICAL SPECIFICATIONS

### ENGINE

- Euro IV compliant
- Engine type - Petrol
- Engine code - 2AZ-FE
- Engine displacement - 2362cc
- Engine configuration - 4 cylinder in-line
- Valve train - Double Over Head Camshaft (DOHC) with 4 valves per cylinder valve mechanism
- Variable Valve Timing with intelligence (VVT-i)
- Max. power - 117kW/5700rpm
- Max. torque - 218Nm/4000rpm

### FUEL

- Fuel system - Electronic Fuel Injection (EFI)
- Fuel type - 91 RON unleaded
- Fuel economy - Manual 8.9 L/100km (Combined Cycle)<sup>§</sup>
- Automatic 8.8 L/100km (Combined Cycle)<sup>§</sup>

<sup>§</sup>Fuel consumption will vary depending on driving conditions/style, vehicle conditions and options/accessories. Source of fuel consumption data: ADR81/02 combined cycle.

### EXHAUST

- Variable back-pressure muffler

### TRANSMISSION

- Transmission - 5-Speed manual (Altise & Sportivo only)/ 5-Speed Automatic with uphill/downhill control and gated shift (Available on all grades)

### STEERING

- Steering system - Rack and pinion
- Power steering - Hydraulic
- Turns lock to lock - 3.2
- Turning circle at kerb - 11m

### BRAKES

- Front - Ventilated discs
- Rear - Solid discs
- Active Braking with intelligence (AB-i) incorporating Anti-skid Braking System (ABS) with Electronic Brake-force Distribution (EBD) and Brake Assist (BA)

### SUSPENSION

- Front - MacPherson strut type
- Rear - Dual Link strut type

### DIMENSIONS

- Overall length - 4815mm
- Overall width - 1820mm
- Overall height - 1480mm
- Wheelbase - 2775mm
- Front and rear track - 1575mm/1565mm
- Ground clearance - 129mm

### WEIGHTS/CAPACITIES

- Seating capacity - 5
- Fuel tank capacity (litres) - 70
- Tare mass (kg)
  - Altise manual - 1415
  - Altise automatic - 1450
  - Ateva automatic - 1460
  - Sportivo manual - 1430
  - Sportivo automatic - 1470
  - Grande automatic - 1480

### TOWING CAPACITY\*

- Without trailer brakes - 500kg
- With trailer brakes - 1200kg

\*Towing capacity is subject to regulatory requirements, towbar design and towing equipment limitations.

## ALTISE STANDARD FEATURES

### EXTERIOR

- Body coloured front and rear bumpers
- Body coloured power exterior mirrors
- Body coloured door handles
- 16" steel wheels
- 215/60R16 95V tyres
- Full size spare steel wheel
- Front and rear mudflaps
- Underbody airflow enhancement - under-engine cover
- LED Tail Lamps

### INTERIOR

- Front seat height adjustable headrests
- 60:40 split fold rear seat
- Telescopic and tilt steering column adjustment
- 2 Rear seat height adjustable headrests
- Air conditioning with pollen filter
- Power windows with driver's auto up/down and Anti-Jam
- 3-spoke urethane steering wheel with audio control switches
- Adjustable rear ventilation vents
- Manual front seats slide and recline
- Driver height adjustable seat
- Power driver's lumbar support adjustment
- Driver's and Passenger's Vanity Mirror Illumination

## TOYOTA SERVICE ADVANTAGE CUTS NEW CAR RUNNING COSTS

Toyota Service Advantage makes owning your Camry even more economical because you are entitled to low cost scheduled servicing. That's up to four standard scheduled services during the first three years or 60,000km, whichever occurs first. Terms and conditions apply. See your Toyota dealer or [advantage.toyota.com.au](http://advantage.toyota.com.au) for eligibility, pricing and more information. Toyota Service Advantage pricing represents the maximum amount payable for standard scheduled servicing which is as per 'maintenance for normal operating conditions' outlined in the Warranty & Service Handbook's service schedule. Service Advantage eligibility excludes Government and Rental vehicles and certain other exclusions apply.

**IMPORTANT NOTICE - PLEASE READ:** Toyota Australia uses its best endeavours to ensure brochure information is correct when published. You must check with your authorised Toyota dealer when ordering to ensure the vehicle with your chosen specifications, equipment and colour is available and that the vehicle can be delivered within a timeframe suitable to you. When ordering accessories, you must check with your authorised Toyota dealer to ensure the accessory's design, features and colours are available and will fit your vehicle. Colours displayed in this brochure are a guide only and may vary from actual colours due to printing / display process. Toyota Australia reserves the right to change without notice, at any time, prices, colours, materials, equipment, specifications and discontinues colours/models. To the full extent allowed by law, Toyota Australia will not be liable for any damage, loss or expense incurred as a result of reliance on this brochure in any way. Distributed nationally by Toyota Motor Corporation Australia Limited, ABN 64 009 686 097 of Corner Gannons Road and Captain Cook Drive Caringbah, NSW 2229. Part No. CAMRY1009S9. Printed October 2009. 10Y8736

## INSTRUMENTS AND CONTROLS

- Cruise control
- Tachometer
- Day/night interior mirror
- Front variable intermittent windscreen wipers
- Rear window demister
- Auto-on/Auto-off headlights
- Digital clock
- Power accessory socket

## STORAGE

- Sunglasses holder in overhead console
- Passenger side lockable glove box
- Centre console with storage box lid
- Front door pockets (x2)
- Front cup holders (x2)
- Net type pockets behind driver and front passenger seat

## LIGHTING

- Door operated interior dome lamp with delay
- Front map lamps
- Illuminated ignition
- Luggage compartment lamp

## SOUND SYSTEM

- Bluetooth<sup>®</sup> hands-free compatible Single Disc CD Player with MP3, WMA CD Compatibility and AM/FM Tuner
- Audio Input compatible with portable MP3 players
- 6 speakers

<sup>^</sup>The Bluetooth word mark is owned by Bluetooth SIG, Inc. Bluetooth<sup>®</sup> will only operate with telephones enabled with compatible Bluetooth<sup>®</sup> wireless technology (HFP (Hands Free Profile) v1.0 and OPP (Object Push Profile) v1.1 international standards). OPP functionality only works on satellite navigation equipment.

## SAFETY

- Active Braking with intelligence (AB-i) incorporating Anti-skid Braking System (ABS) with Electronic Brake-force Distribution (EBD) and Brake Assist (BA)
- Vehicle Stability Control (VSC) and Traction Control (TRC)
- Global Outstanding Assessment (GOA) body
- Toyota Safe-T-Cell
- Driver and front passenger SRS airbags
- Front side and full length curtain SRS airbags
- Driver and front passenger pre-tensioning and forcelimiter seatbelts with Emergency Locking Retractor (ELR)
- Whiplash Injury Lessening (WIL) Front Seats
- Impact sensing fuel cut
- Front seatbelt height adjustment
- 3-point lap-sash rear seatbelts
- Pedestrian safety enhancing bonnet and front fenders
- Collapsible steering column

## CHILD SAFETY

- Automatic Locking Retractor (ALR) rear seatbelts for child seats
- Child restraint anchorage points
- Door ajar warning

## SECURITY

- Engine immobiliser with audible alarm
- Remote central locking including boot release on remote
- Panic alarm on remote
- Key in ignition/door lockout override
- Remote fuel lid release

## OPTIONS AVAILABLE ON ALTISE

- 16" Alloy Wheels<sup>\*\*</sup> and Rear Lip Spoiler
- Reverse camera<sup>\*\*</sup> + Bluetooth<sup>®</sup> 6 Disc in-dash Display Audio CD Changer with MP3, WMA CD Capability and AM/FM Tuner with USB and MP3 compatibility
- Reverse camera<sup>\*\*</sup> + Bluetooth<sup>®</sup> 6 Disc in-dash Display Audio CD Changer with MP3, WMA CD Capability and AM/FM Tuner with USB and MP3 compatibility + 16" Alloy Wheels<sup>\*\*</sup> and Rear Lip Spoiler
- Mica/Metallic Paint

<sup>\*</sup>(Set of 4)

## ATEVA FEATURES IN ADDITION TO ALTISE

### EXTERIOR

- Front fog lamps
- 16" Alloy Wheels (Full size spare steel wheel)
- Chrome Radiator Grille surround
- Body coloured front and rear mudflaps

### INTERIOR

- Premium gear shift knob, park-brake handle and steering wheel
- Chrome door handles
- Power adjustable front seats (drivers 8-way/passenger 6-way)
- Front dual zone climate control air conditioning
- Trip Computer/Multi-function display with external temperature display
- Rear centre height adjustable head restraint
- Rear seat centre armrest with cupholders (x2)

### SOUND SYSTEM

- Bluetooth<sup>®</sup> 6 Disc in-dash Display Audio CD Changer with MP3, WMA CD Capability and AM/FM Tuner with USB and MP3 compatibility
- 6 speakers

## SAFETY

- Reverse camera<sup>\*\*</sup>

## OPTIONS AVAILABLE ON ATEVA

- Leather accented interior
- Power, tilt and slide moonroof + Rear Personal lamps + Leather accented interior
- Mica/Metallic Paint

## GRANDE FEATURES IN ADDITION TO ATEVA

### EXTERIOR

- Rain Sensing Wipers
- 17" Alloy Wheels
- 215/55R17 93V tyres
- Full size spare alloy wheel
- Chrome exhaust diffuser
- Chrome door handles
- Rear parking sensors
- Chrome rear garnish
- Mica/Metallic Paint

### INTERIOR

- Vehicle interior featuring leather accents
- Smart Entry and Start System
- Audio Visual Navigation incorporating DVD-based satellite navigation- with Bluetooth<sup>®</sup> mobile phone compatibility
- Steering wheel mounted Bluetooth<sup>®</sup> controls
- Electro-chromatic Rear view interior mirror
- Sunvisor lamps
- Rear Power Sunshade

### SOUND SYSTEM

- 4 Disc in-dash CD changer with MP3, WMA CD Compatibility and AM/FM Tuner
- 8 speakers (including Sub-woofer and Amplifier)

- Current Navigation mapping database encompasses major capital and primary national road networks, as well as offering some coverage of regional areas.

## OPTIONS AVAILABLE ON GRANDE

- Power, tilt and slide moonroof + Rear personal lamps

## SPORTIVO FEATURES IN ADDITION TO ALTISE

### SUSPENSION

- Sports suspension

### EXTERIOR

- Front fog lamps
- 17" Alloy Wheels
- Full size spare alloy wheel
- 215/55R17 93V tyres
- Sports radiator grille
- Sports body kit and Rear Lip Spoiler
- Sports headlights
- Chrome exhaust diffuser
- Additional underbody airflow enhancement - Rear underfloor and under-fuel tank covers
- Mica/Metallic Paint

### INTERIOR

- Rear lockable ski-port in lieu of 60:40 split fold rear seats
- Premium gear shift knob, park-brake handle and steering wheel
- Chrome door handles
- Front dual zone climate control air conditioning
- Push button heater control and LCD display
- Power adjustable front seats (driver's 8-way/passenger 6-way)
- Trip computer/Multi-information display with external temperature display
- Rear suspension tower brace (behind rear seats)
- Rear seat centre armrest with cupholders (x2)

### SOUND SYSTEM

- Bluetooth<sup>®</sup> 6 Disc in-dash CD Changer with MP3, WMA CD Capability and AM/FM Tuner and MP3 compatibility
- 6 speakers

## OPTIONS AVAILABLE ON SPORTIVO

- Reverse camera<sup>\*\*</sup> + Bluetooth<sup>®</sup> 6 Disc in-dash Display Audio CD Changer with MP3, WMA CD Capability and AM/FM Tuner with USB and MP3 compatibility + Leather accented interior
- Reverse camera<sup>\*\*</sup> + Bluetooth<sup>®</sup> 6 Disc in-dash Display Audio CD Changer with MP3, WMA CD Capability and AM/FM Tuner with USB and MP3 compatibility + Power, tilt and slide moonroof + Rear personal lamps
- Reverse camera<sup>\*\*</sup> + Bluetooth<sup>®</sup> 6 Disc in-dash Display Audio CD Changer with MP3, WMA CD Capability and AM/FM Tuner with USB and MP3 compatibility + Leather accented interior + Power, tilt and slide moonroof + Rear personal lamps

<sup>^</sup>The Bluetooth word mark is owned by Bluetooth SIG, Inc. Bluetooth<sup>®</sup> will only operate with telephones enabled with compatible Bluetooth<sup>®</sup> wireless technology (HFP (Hands Free Profile) v1.0 and OPP (Object Push Profile) v1.1 international standards). OPP functionality only works on satellite navigation equipment.

<sup>\*\*</sup>Rear view camera is designed as a driver assist device only and should not be used as a substitute for skilled driving and safe parking practices. The area into which the vehicle is to be reversed must still be visually monitored by the driver while parking.